



## Holmewood Hub (BD4)

### Organisation details

Following a series of community engagement events, Holmewood's local Councillors have transformed a vacant shop in the heart of the community into a vibrant café space. This initiative aims to provide a welcoming environment where residents can access advice and support services (from a wider range of service providers), foster connections, and participate in drop-in sessions and workshops designed to benefit the community. As part of the Bradford 2025 celebrations, the café will also host a variety of engaging activities to bring people together and celebrate Bradford being the UK City of Culture.

### Project Details

As the images below show, this building has been completely renovated. The final part of the renovation is to decorate, in time for an open day to take place before Christmas 2024. Redecorating will include: (Site Pictures below)

- Preparing surfaces
- Painting walls – 2x coats
- Painting doors – gloss
- Painting skirting boards – gloss

The above is a simplified process we will use on the day. As the building is large, we will be working through room by room to cover as much as possible.

### Number of volunteers & Dates

We are looking to engage approx. 10 volunteers.

Date: Tuesday 4<sup>th</sup> February (9:30am to 4:30pm)

We understand this project has a quick turnaround compared to our usual business team volunteer days. On this occasion, we welcome smaller groups, with 1-3 volunteers per business, working together as part of a combined team representing multiple Businesses.

### On-site support

On the day Participate will be providing a member of staff to support the volunteers. A trained first aider and first aid kit will be available during the challenge. A tools talk and health and safety briefing will be given by Participate at the beginning of the day. We will also share with you our completed Risk Assessment for your own records, once interest is submitted.

### Preparation

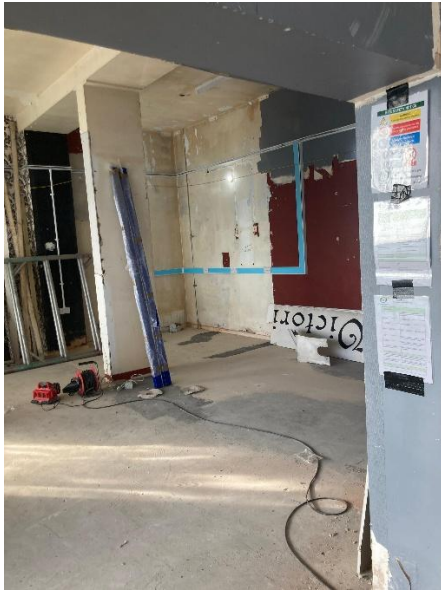
Volunteers will be undertaking painting activities and are required to wear old and reasonably robust clothing that you will not mind getting paint on. We do offer paint overalls, although these do not guarantee no damage to clothing. Where personal protective equipment is required it will be provided, this includes latex free gloves.

### Materials, tools and equipment to be provided by Participate

Participate and Holmewood Hub will provide all tools and materials to complete the tasks identified.

## Site Pictures

These pictures have been taken during development works. When volunteers are taking part, this will have progressed significantly.



## Contact Details

Luke Dennison

Business Engagement Lead

[luke@participateprojects.org.uk](mailto:luke@participateprojects.org.uk)

01274 288010

07518 130186